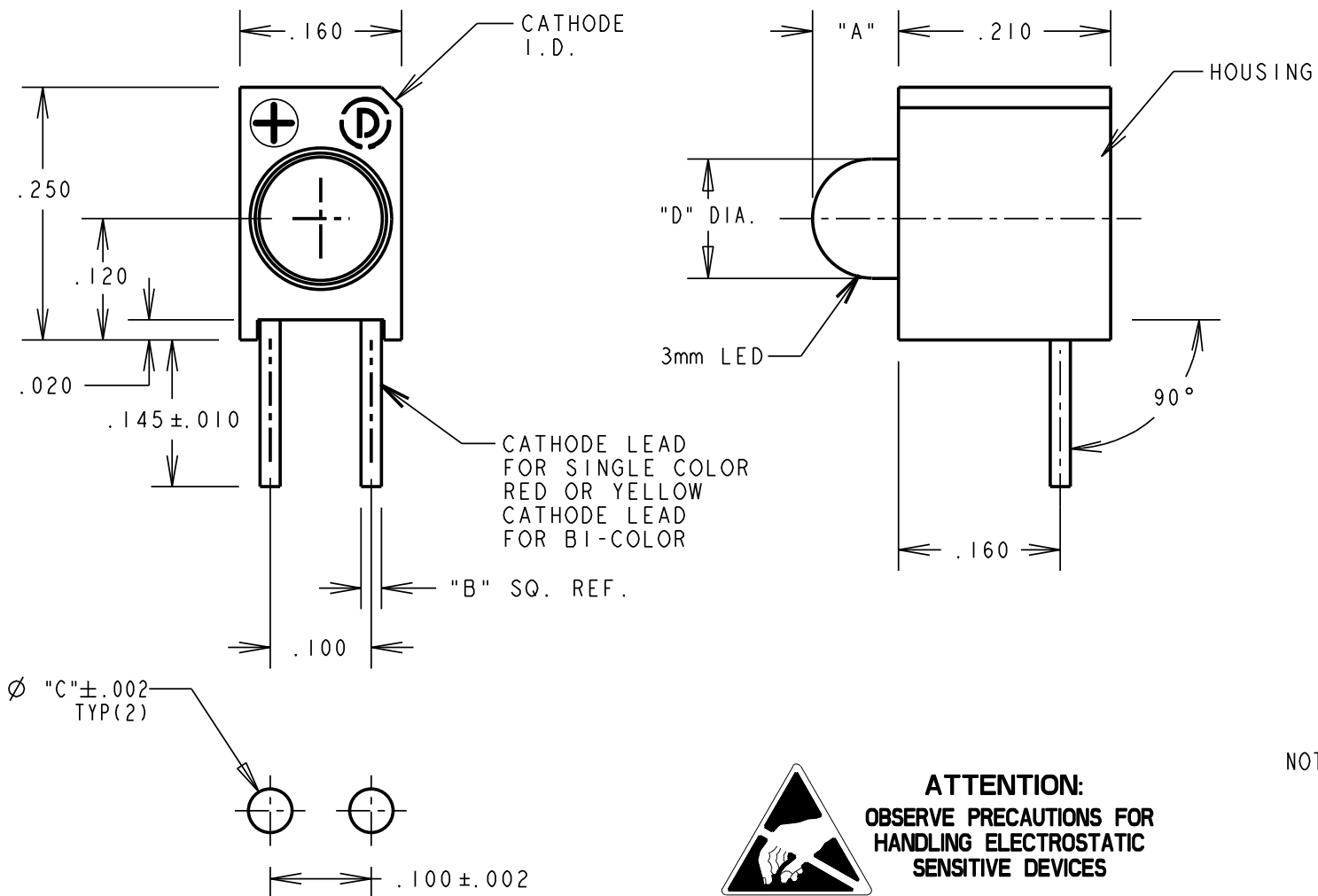


| REV | ECN NO | REVISIONS | DRN | CKD | APP | DATE |
|-----|--------|---------------------|-----|-----|------|---------|
| A | — | NEW RELEASE | TWC | TC | N.O. | 8-29-05 |
| B | — | ADDED P/N 551-2509F | TWC | | | |

| PART NUMBER | OPERATING CHARACTERISTICS AT T _A = 25°C | | | | | | | | | TEST CONDITIONS | |
|-------------|--|---------|---------|----------------------------------|----------------------|---------|--------------------------|---------|---------|-----------------|------------------------|
| | FORWARD VOLTAGE/CURRENT | | | REVERSE VOLTAGE (V) | PEAK WAVELENGTH (nm) | | LUMINOUS INTENSITY (mcd) | | | | |
| | MIN | TYP | MAX | | MIN | TYP | MAX | MIN | TYP | | MAX |
| 551-0209F | | 2.1 V | 3.0 V | V _R = 3 V MIN @ 10μA | | 563 | | 5.6 | 16.0 | | I _F = 10 mA |
| 551-0309F | | 2.1 V | 3.0 V | V _R = 3 V MIN @ 10μA | | 585 | | 2.2 | 6.3 | | I _F = 10 mA |
| 551-0409F | | 2.0 V | 3.0 V | V _R = 3 V MIN @ 10μA | | 650 | | 3.6 | 10 | | I _F = 10 mA |
| 551-0509F | | 10 mA | 20 mA | V _R = 5 V MIN @ 100μA | | 635 | | 8.7 | 29 | | V _F = 5 V |
| 551-0609F | | 10 mA | 20 mA | V _R = 5 V MIN @ 100μA | | 565 | | 5.6 | 19 | | V _F = 5 V |
| 551-0709F | | 10 mA | 20 mA | V _R = 5 V MIN @ 100μA | | 585 | | 3.7 | 12.6 | | V _F = 5 V |
| * 551-0809F | | 3.5 V | 4.2 V | V = 5 V MIN @ 10 mA | | 428 | | 6.3 | | 20 | I _F = 10 mA |
| 551-1109F | | 1.7 V | 2.2 V | V _R = 5 V MIN @ 50μA | | 635 | | 1.0 | 1.6 | | I _F = 2 mA |
| 551-1209F | | 1.8 V | 2.7 V | V _R = 5 V MIN @ 50μA | | 585 | | 1.0 | 1.6 | | I _F = 2 mA |
| 551-1309F | | 1.9 V | 2.2 V | V _R = 5 V MIN @ 50μA | | 565 | | 1.0 | 1.6 | | I _F = 2 mA |
| 551-1409F | | 1.6 V | 1.8 V | V _R = 5 V MIN @ 100μA | | 645 | | 2 | 3 | | I _F = 1 mA |
| 551-1509F | | 2.1 V | 2.8 V | V = 5 V MIN @ 100μA | | 565 | | 32 | 50 | | I _F = 10 mA |
| 551-1609F | | 2.1 V | 2.8 V | V = 5 V MIN @ 100μA | | 585 | | 10 | | 50 | I _F = 10 mA |
| 551-1709F | | 2.0 V | 2.8 V | V = 5 V MIN @ 100μA | | 635 | | 8.7 | 29 | | I _F = 10 mA |
| 551-1809F | | 1.8 V | 2.4 V | V = 4 V MIN @ 100μA | | 660 | | 8.7 | 48.0 | | I _F = 20 mA |
| 551-2509F | 1.5 V | 1.9 V | 2.4 V | V = 5 V MIN @ 100μA | | 600 | | 3.4 | 7.0 | 10.8 | I _F = 10 mA |
| 551-3009F | | 2.0/2.1 | 2.8/2.8 | N/A | | 635/565 | | 2.5/3.7 | 4.7/10 | | I _F = 10 mA |
| 551-3109F | | 2.1/2.1 | 2.8/2.8 | N/A | | 585/565 | | 2.5/2.5 | 4.3/6.3 | | I _F = 10 mA |
| 551-3209F | | 2.0/2.1 | 2.8/2.8 | N/A | | 630/585 | | 1.7/1.7 | 5.6/5.6 | | I _F = 20 mA |

| PART NUMBER | LED COLOR | "A" DIMENSION | "B" DIMENSION | "C" DIMENSION | "D" DIMENSION |
|-------------|--------------------------|---------------|---------------|---------------|---------------|
| 551-0209F | GREEN DIFFUSED | .095 | .020 | .043 | .122±.008 |
| 551-0309F | YELLOW DIFFUSED | .095 | .020 | .043 | .122±.008 |
| 551-0409F | RED DIFFUSED | .095 | .020 | .043 | .122±.008 |
| 551-0509F | RED DIFF. 5 VOLT | .085 | .018 | .040 | .115±.010 |
| 551-0609F | GREEN DIFF. 5 VOLT | .085 | .018 | .040 | .115±.010 |
| 551-0709F | YELLOW DIFF. 5 VOLT | .085 | .018 | .040 | .115±.010 |
| * 551-0809F | BLUE NON-TINTED DIFFUSED | .091 | .020 | .043 | .110±.004 |
| 551-1109F | 2 mA RED DIFFUSED | .085 | .018 | .040 | .115±.010 |
| 551-1209F | 2 mA YELLOW DIFFUSED | .085 | .018 | .040 | .115±.010 |
| 551-1309F | 2 mA GREEN DIFFUSED | .085 | .018 | .040 | .115±.010 |
| 551-1409F | 1 mA RED WATER CLEAR | .085 | .018 | .040 | .115±.010 |
| 551-1509F | GREEN TINTED NON-DIFF. | .085 | .018 | .040 | .115±.010 |
| 551-1609F | YELLOW TINTED NON-DIFF. | .085 | .018 | .040 | .115±.010 |
| 551-1709F | RED TINTED NON-DIFF. | .085 | .018 | .040 | .115±.010 |
| 551-1809F | RED TINTED DIFFUSED | .085 | .020 | .043 | .118±.010 |
| 551-2509F | ORANGE DIFFUSED | .085 | .018 | .040 | .115±.010 |
| 551-3009F | RED/GREEN BI-COLOR | .085 | .020 | .043 | .118±.010 |
| 551-3109F | YELLOW/GREEN BI-COLOR | .085 | .020 | .043 | .118±.010 |
| 551-3209F | RED/YELLOW BI-COLOR | .085 | .020 | .043 | .118±.010 |



RECOMMENDED P.C. BOARD HOLE PATTERN



ATTENTION:
OBSERVE PRECAUTIONS FOR
HANDLING ELECTROSTATIC
SENSITIVE DEVICES

NOTES:

1. DIALIGHT PART NUMBER: 551-XX09F

* ATTENTION: OBSERVE PRECAUTIONS FOR HANDLING
ELECTROSTATIC SENSITIVE DEVICES.

RoHS Compliant 551-XX09F Thru hole CBI

Part Numbers with the "F" suffix ending are RoHS Compliant.
Example: 551-1309F
The bag packaging is marked with "RoHS Compliant" label or
equivalent markings.
Parts can be wave soldered, dip soldered or hand soldered using
typical lead-free soldering process with max 260°C temp. for 5 sec.

| | | |
|---|--|----------|
| THIS DRAWING AND THE CONTENTS HEREIN ARE CONFIDENTIAL AND THE SOLE PROPERTY OF DIALIGHT. REPRODUCTION OF THIS DRAWING OR CONSTRUCTION OF ANY PARTS WITHIN THIS DRAWING ARE FORBIDDEN WITHOUT THE WRITTEN CONSENT OF DIALIGHT. | | |
| SCALE: DRAWING SCALE ALL DIM'S IN: INCHES (MM) | DRAWING NUMBER C-17296 | REV B |
| TOLERANCES: UNLESS OTHERWISE SPECIFIED FRACTIONS: ±1/64 DECIMALS (.XX): ±.01 DECIMALS (.XXX): ±.005 DECIMALS (.XXXX): ±.0005 ANGLES: ±1° | TITLE 3mm LED CBI RoHS COMPLIANT | |
| FINISH: | MATERIAL | |
| FSCM 83330 | Dialight 1501 ROUTE 34 SOUTH FARMINGDALE, NJ 07727 | |
| SHEET 1 OF 1 FAMILY TABLE: | | |